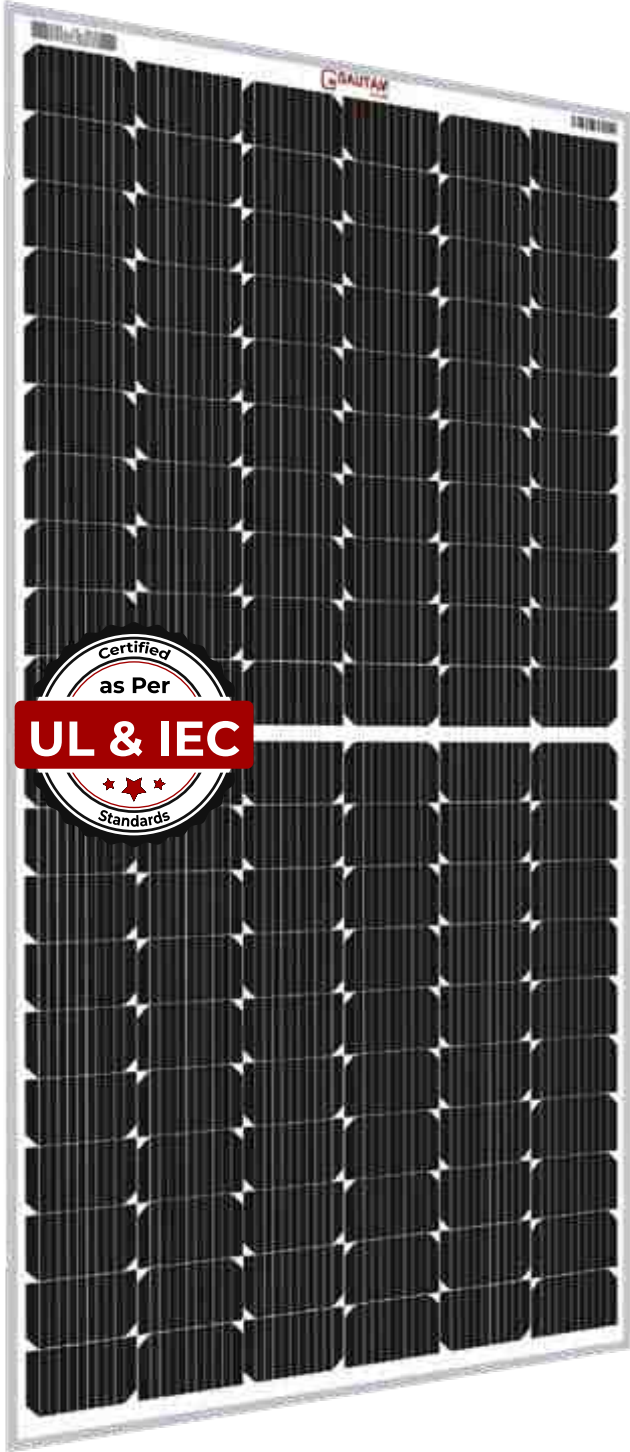


21.09%

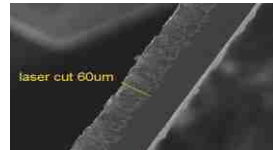
Maximum Module Efficiency

Ideal for Rooftop



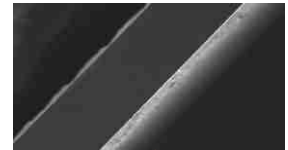
Non Destructive Cell Cutting for Zero Micro Cracks

X Manual Laser Cutting



More than 1500 °C
High Temperature

Non-Destructive Cutting (NDC)
30% More Mechanical Strength



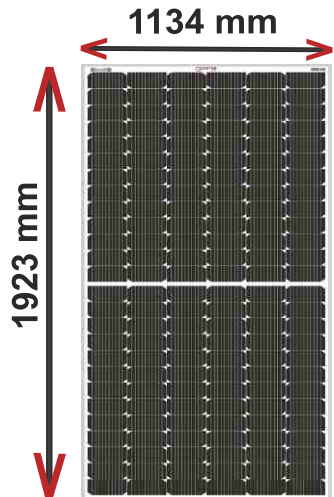
Less than 130 °C
Low Temperature

Ideal for Residential Rooftops Easy to Handle

460 Wp

Area

2.18 m²



FRONT SIDE ELECTRICAL DATA (STC)					
Model No.	G2X1320-UHAA	G2X1335-UHAA	G2X1350-UHAA	G2X1365-UHAA	G2X1380-UHAA
Peak Power Output - Pmax(Wp)	440	445	450	455	460
Power Output Tolerance (Wp)	0 ~ +5	0 ~ +5	0 ~ +5	0 ~ +5	0 ~ +5
Open Circuit Voltage-Voc(V)	40.75	40.95	41.20	41.40	41.60
Maximum Power Voltage-Vmpp(V)	35.28	35.40	35.64	35.76	35.88
Short circuit current-Isc(A)	13.35	13.45	13.51	13.61	13.72
Maximum Power Current-Impp(A)	12.47	12.57	12.63	12.72	12.82
Module Efficiency (%)	20.18	20.41	20.64	20.87	21.09
Fill Factor (%)	80.88	80.79	80.85	80.75	80.60

*(STC) = 1000 W/m² Irradiance, Air Mass 1.5 and 25°C Cell Temperature

ELECTRICAL DATA (NOCT)					
Peak Power Output - Pmax(Wp)	326.92	330.64	334.35	338.07	341.78
Open Circuit Current-Voc(V)	37.90	38.08	38.32	38.50	38.69
Maximum Power Voltage-Vmpp(V)	32.28	32.39	32.61	32.72	32.83
Short circuit current-Isc(A)	10.84	10.92	10.97	11.05	11.14
Maximum Power Current-Impp(A)	10.13	10.21	10.26	10.33	10.41

*(NOCT) = 800 W/m² Irradiance, Air Mass 1.5, Ambient Temperature 20°C and Wind Speed 1 m/s

TOTAL POWER (FRONT+BACK)						
With 10% Gain	Peak Power (Wp)	484	490	495	501	506
	Efficiency η_m (%)	22.19	22.47	22.70	22.97	23.20
With 15% Gain	Peak Power (Wp)	506	512	518	523	529
	Efficiency η_m (%)	23.20	23.48	23.75	23.98	24.26
With 20% Gain	Peak Power (Wp)	528	534	540	546	552
	Efficiency η_m (%)	24.21	24.49	24.76	25.04	25.31
With 25% Gain	Peak Power (Wp)	550	556	563	569	575
	Efficiency η_m (%)	25.22	25.50	25.82	26.09	26.37
With 30% Gain	Peak Power (Wp)	572	579	585	592	598
	Efficiency η_m (%)	26.23	26.55	26.83	27.15	27.42

MECHANICAL DATA	
Solar Cells Per Module (units)	120
Cells Configuration (Matrix)	10 × 6 10 × 6
Cell Size(mm)	91 × 182
Length(L) × Width(W) × Thickness(T) in mm	1923 × 1134 × 35
Area of module (sq-m)	2.180682
Weight of module(kg)	23.6 ± 2%

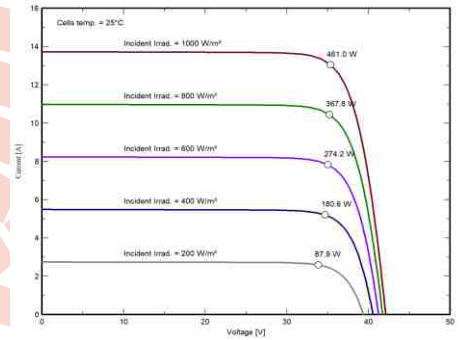
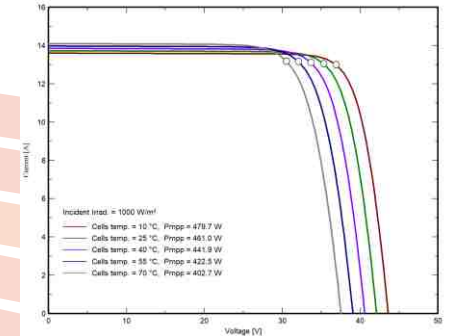
Cell Type	Mono-crystalline PERC (91 × 182)
Junction Box	IP 68 rated Split Junction Box with Individual Bypass Diode
Connector	IP 68 rated MC4 Compatible
Front Cover(Glass)	3.2 mm Low Iron High Transmission AR Coated Tempered Glass
Back Cover (Backsheet)	Poly Vinyl Fluoride/Transparent Backsheet (Composite Film)
Encapsulant	PID Free and UV Resistant
Frame	Anodized Aluminum Frame
Application Class Rating	Class A
Safety Class Rating	Class II
Fire Safety	Class C
Mechanical Load	Snow Load 5400 Pa, Wind Load 2400 Pa
Cable Type	4 mm ²

TEMPERATURE RATINGS	
NOCT	45°C ± 2°C
Temperature Coefficient of Pmax	-0.39% /°C
Temperature Coefficient of Voc	-0.30% /°C
Temperature coefficient of Isc	0.06% /°C
Temperature Range	-40°C to +85°C

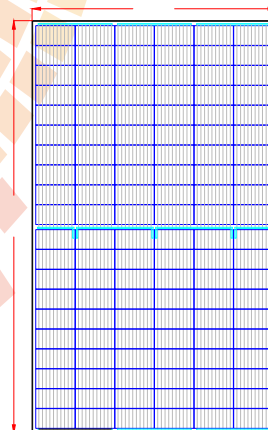
Maximum System Voltage	1500V DC
Maximum Series Fuse Rating	30A

PACKING CONFIGURATION	
Container	40' HQ
Pieces per Pallet	31
Pallets per container	24
Pieces per container	744

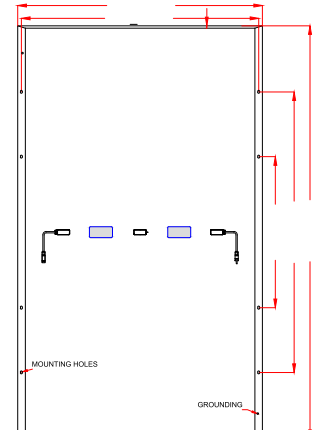
Characteristic Curves



12 Years Product Warranty
25 Years Power Output Warranty



FRONT VIEW



BACK VIEW

Specifications provided in the datasheet are subject to change without Prior notice.